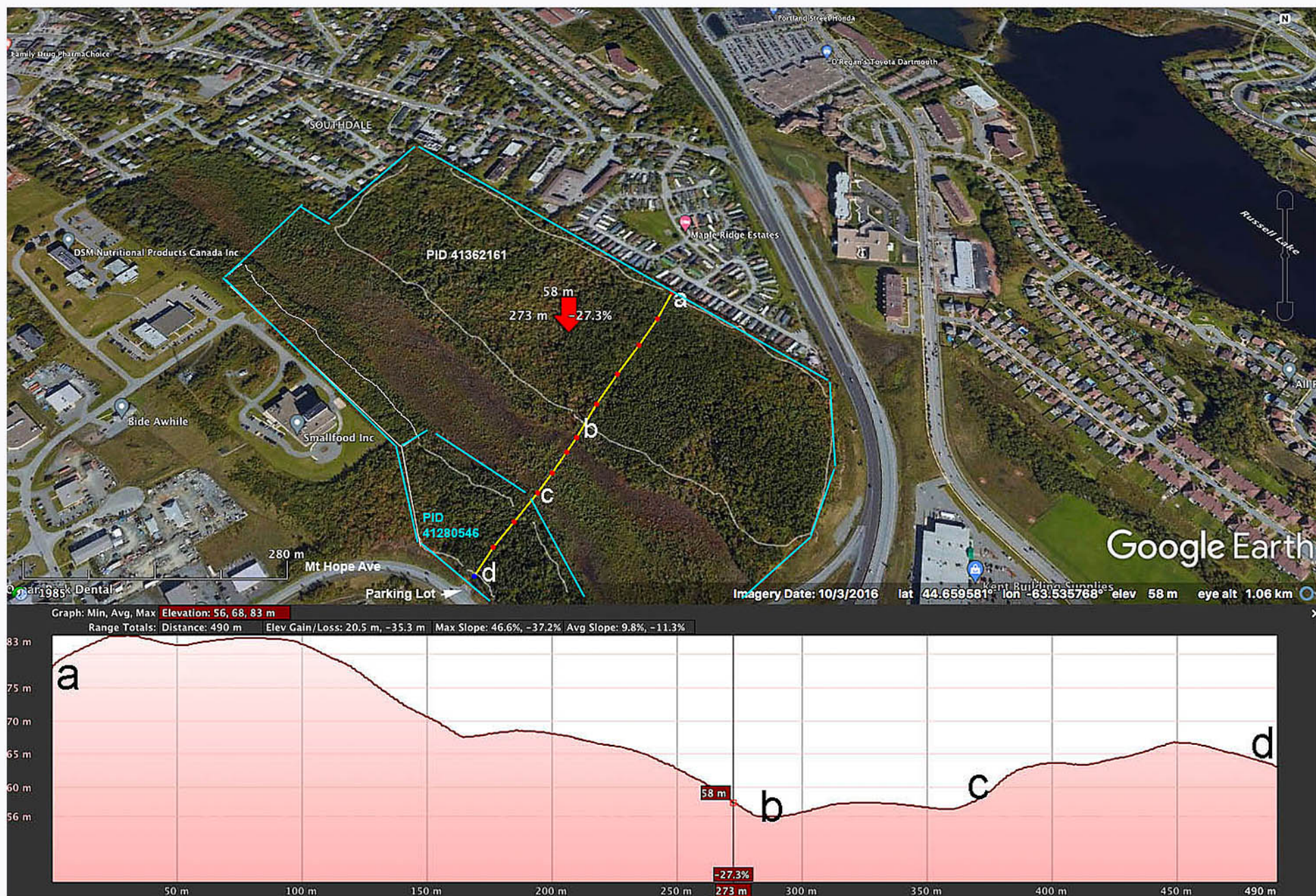


August 24, 2022.

Appendix to An Open Letter in support of William Zebedee's Appeal of Wetland Alteration Approval No 2021-2886385-00 (22-07-29): Can we all take a sober second look at the Southdale Future Growth Node?

by David Patriquin, Professor of Biology, Dalhousie University (retired)
on behalf of the Nova Scotia Wild Flora Society and the Halifax Field Naturalists

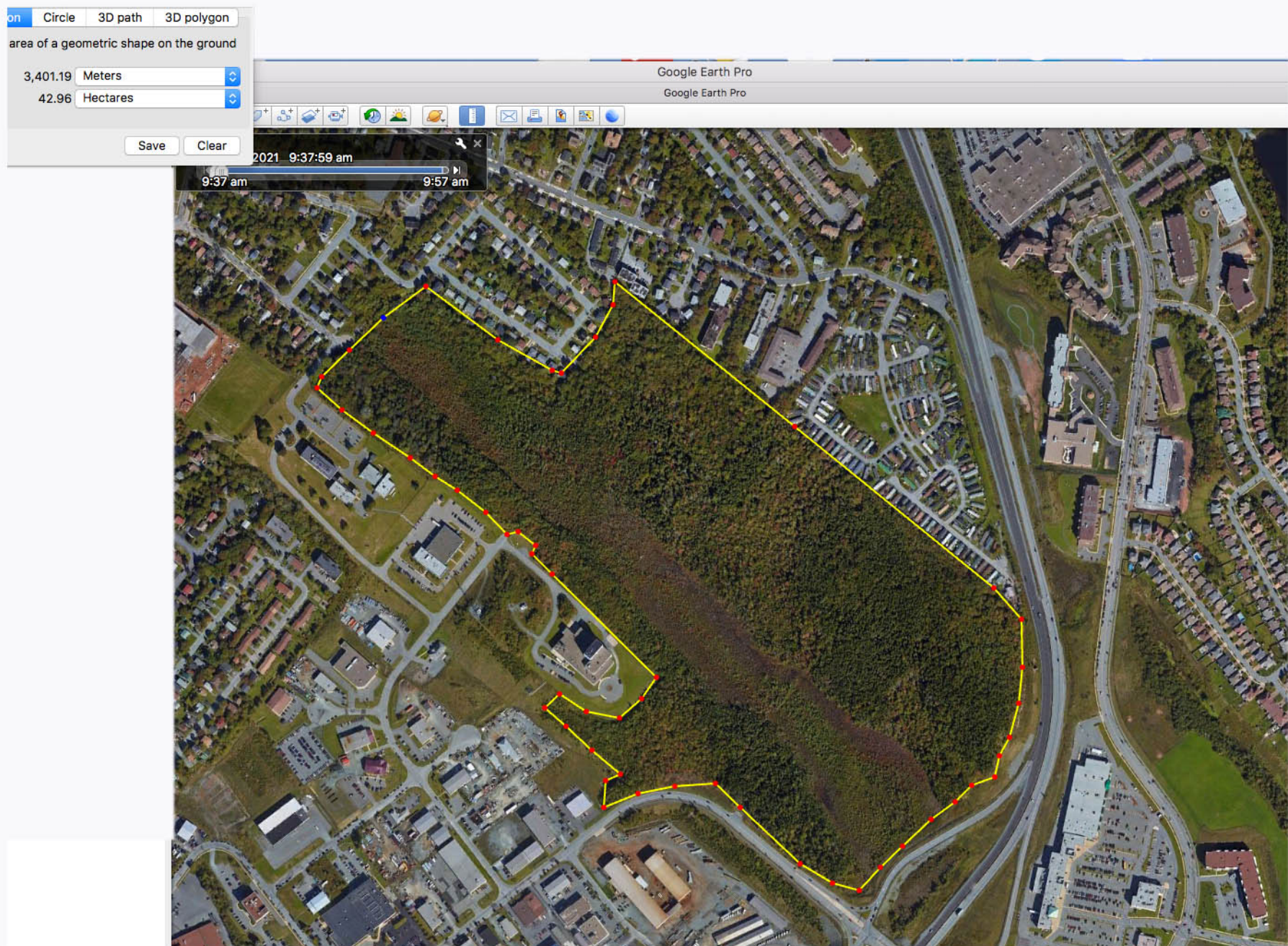
This document contains 12 figures (Maps & Photos)



Appendix Fig. 1: Elevation profile across Southdale site/current PIDs of Interest from Google Earth. The profile crosses the wetland approximately where the causeway is planned. The white-enclosed areas are upland forest; the boundaries towards the wetland include a zone, approximately, of closed canopy forest that may qualify as wetland. The blue lines enclose the area of the combined PIDs of Interest including both wetland and woodland, excluding a piece at the southeast extremity.



Appendix Fig 2: Google Map Satellite View of Eisner Cove Wetland & Vicinity

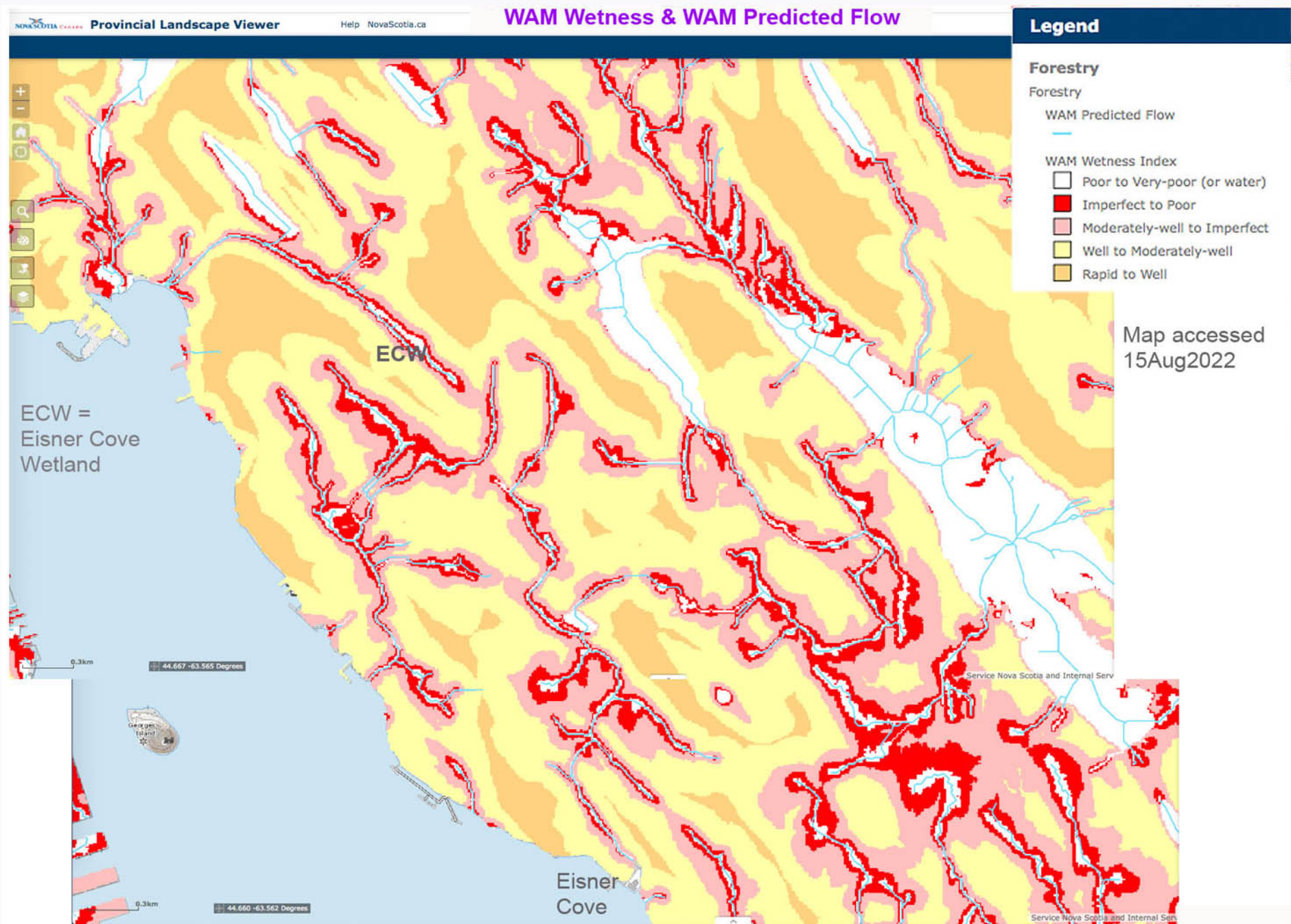


Appendix Fig 3: **Estimation of area of wetland + woodland at South Site**
(Google Earth Measurement)

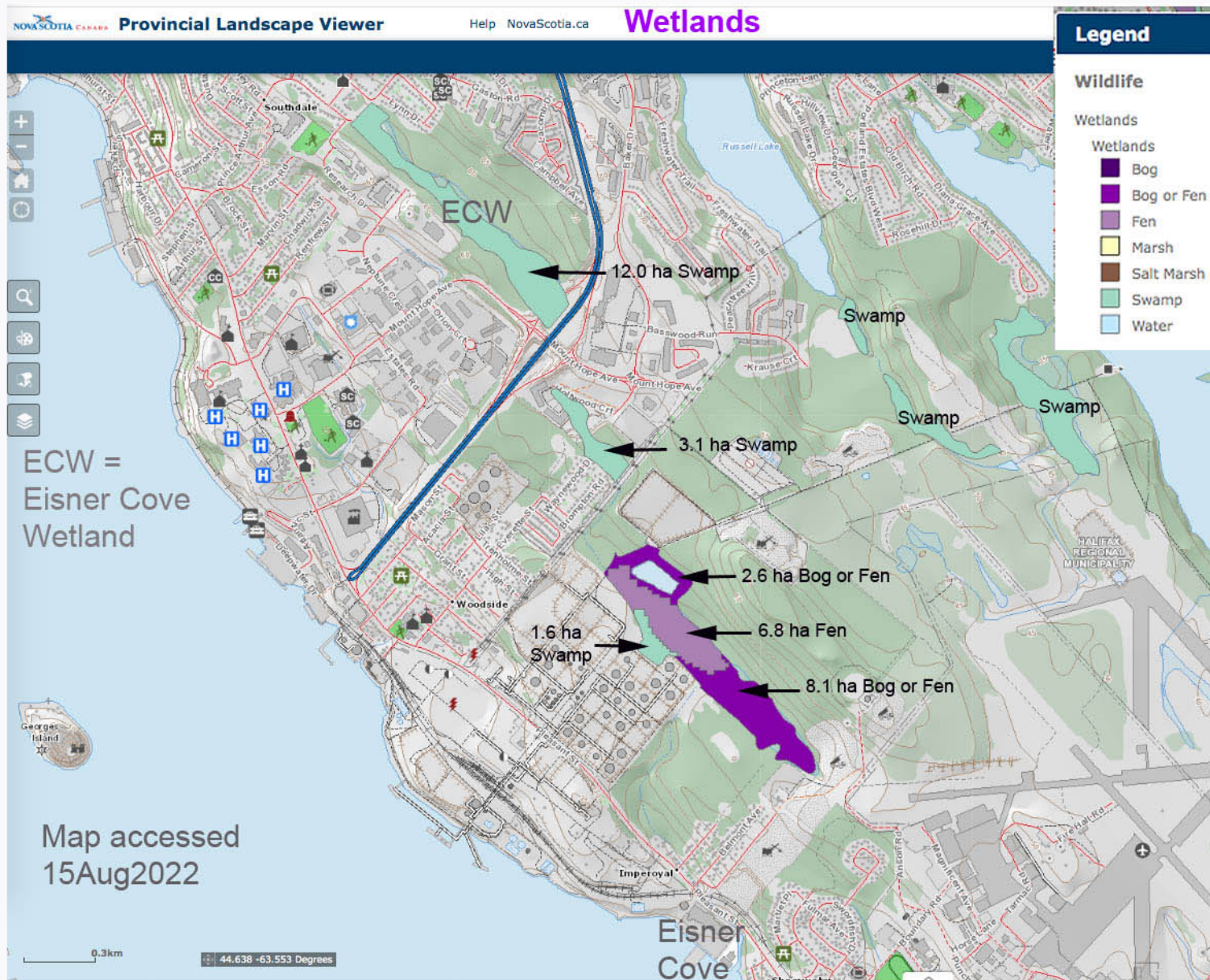
2,407.10 Meters
12.30 Hectares
Save Clear



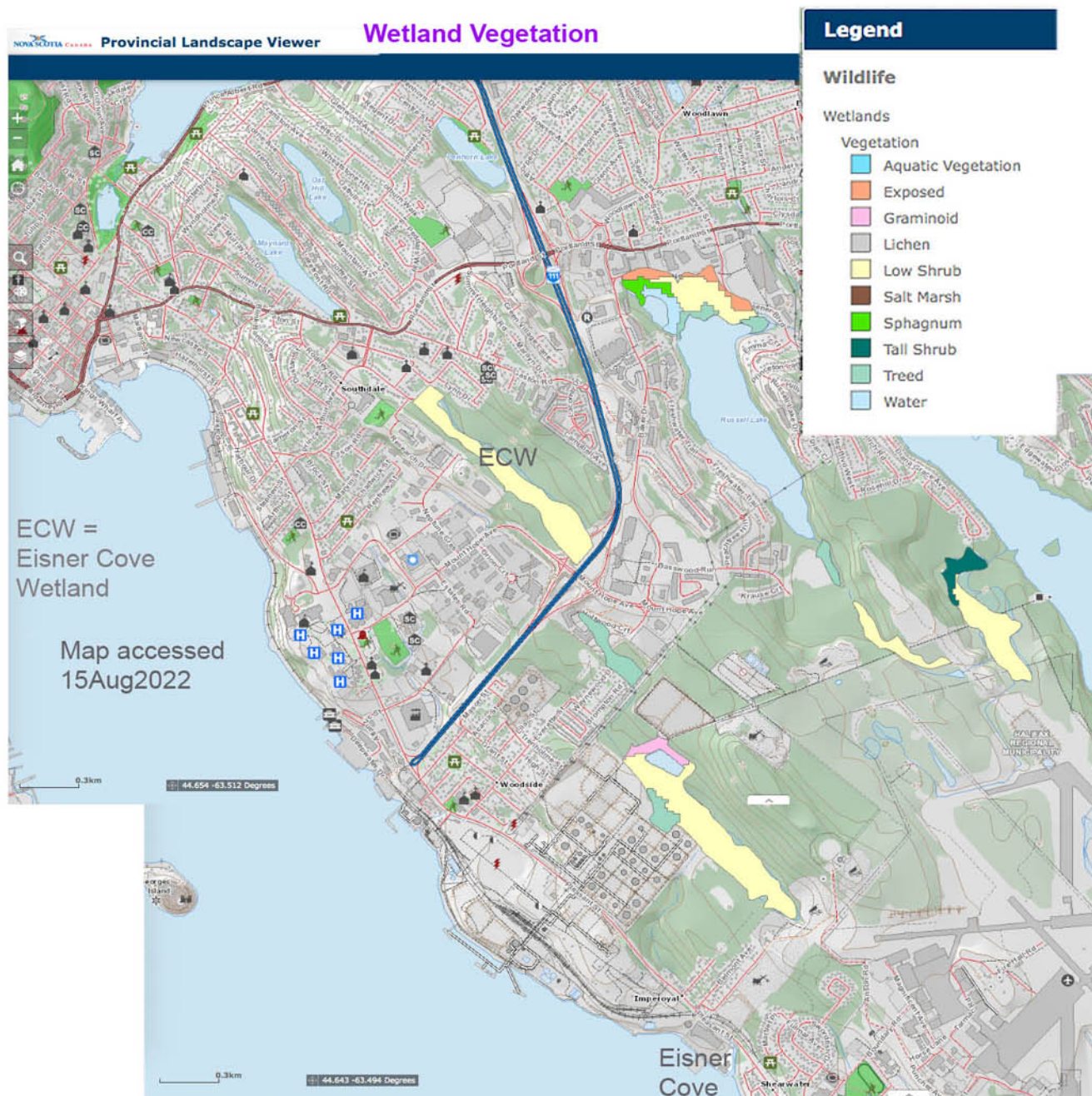
Appendix Fig 4: Estimation of area of wetland at South Site
(Google Earth Measurement)



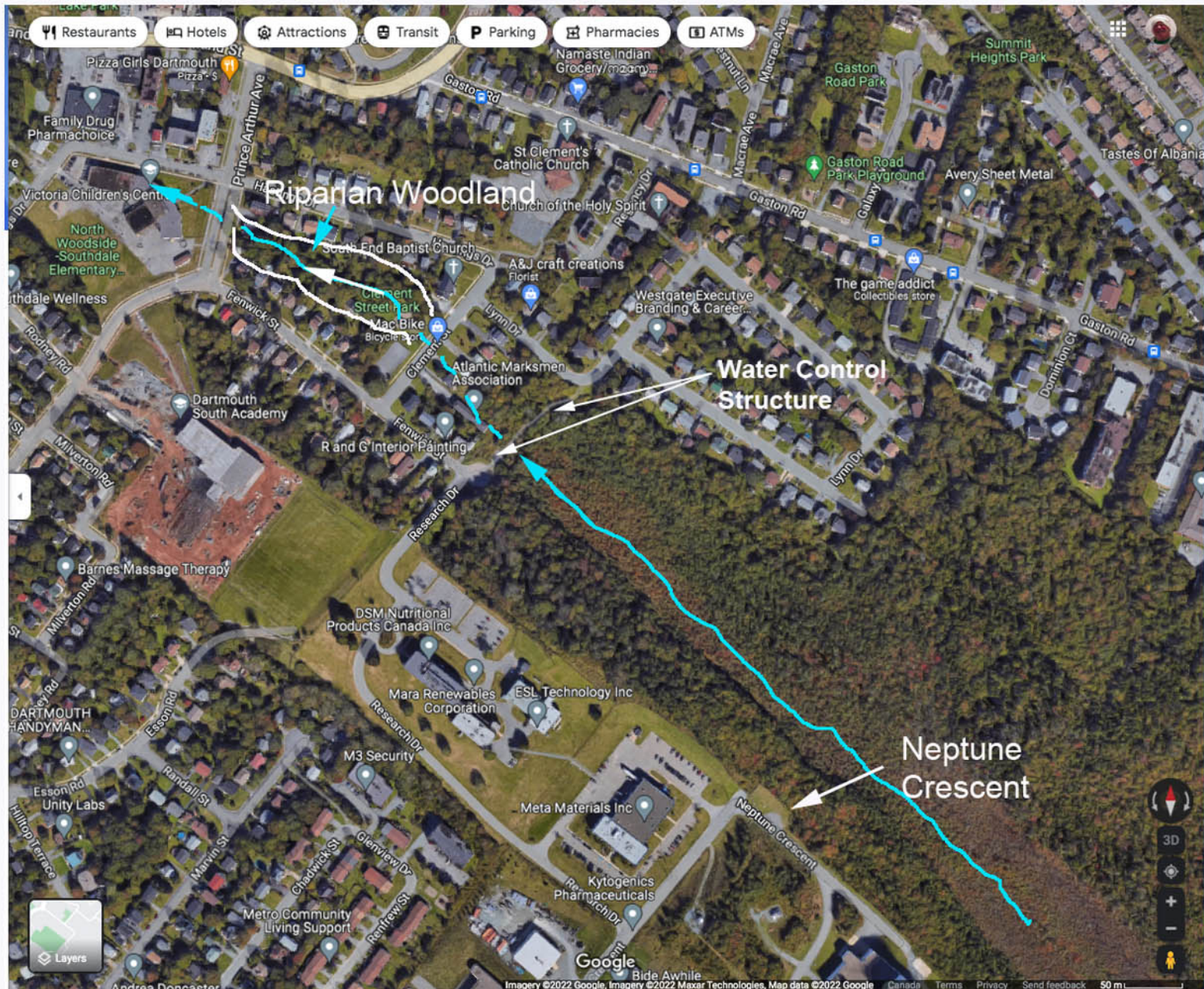
Appendix Fig 6: **WAM Wetness and WAM Predicted Flows through the Southdale site and to the NW and SE into Halifax Harbour.** From NS Landscape Map Viewer



Appendix Fig 7: **Wetlands from the Southdale site southeast to Eisner Cove.**
From NS Landscape Map Viewer



Appendix Fig 8: **Wetlands from the Southdale site southeast to Eisner Cove - Vegetation Types From NS Landscape Map Viewer**

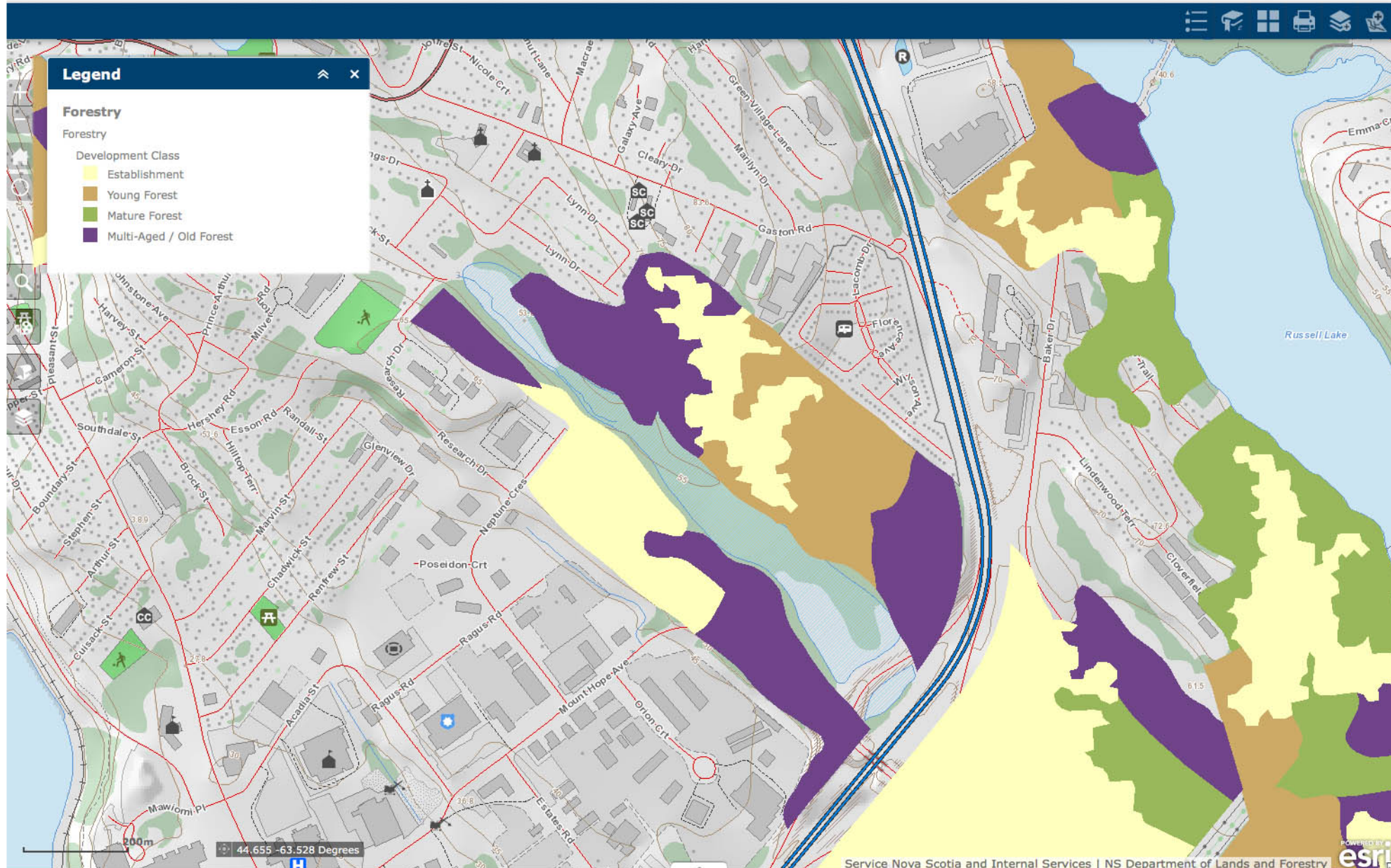


Appendix Fig 9: **Approximate WAM Predicted Flow towards NW end of wetland and beyond, location of Water Control Structure**



Photos on May 30, 2017

Appendix Fig 10. Photos illustrating flowing surface waters and Water Control Structure at the northwest boundary of the wetland.



Appendix Fig 11: **Southdate Site Forest Development Class**
From NS Landscape Map Viewer



Appendix Fig 12: Southdate Site, Linear Feature viewed on Google Earth